

2020-21 GEF IMPACT REPORT

VISION

Support equitable opportunities and innovative learning environments for all GISD students and teachers to achieve success in life.

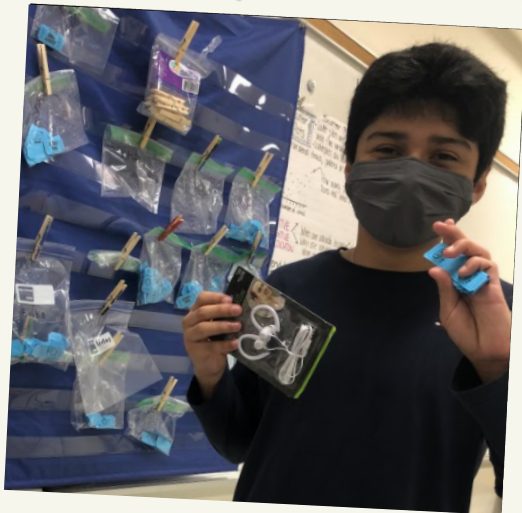


MISSION

Enrich the educational experience and prepare students for the future by providing financial assistance to GISD educators, schools, and students.



During the 2020-21 school year, GEF supplemented GLSD's traditional revenue sources with more than \$204,000 of private financial investment.



THE GISD EDUCATIONAL FOUNDATION...

- Is a 501 (c) (3) non-profit, tax exempt philanthropic organization independent of the Galveston Independent School District (GISD) but complementing it through partnership
- Shares a vision of enhancing education in GISD schools
- Works to increase private support for public education
- Benefits GISD students and staff by supporting activities that extend beyond what tax dollars afford
- Encourages and recognizes creative approaches to education through grants and involvement
- Is governed by a volunteer board of directors made up of business and community leaders



WHO WE SERVE

80%

OF GISD STUDENTS ARE
ECONOMICALLY
DISADVANTAGED
[60% STATEWIDE]

TOTAL STUDENTS

6,648

49% Hispanic

24% African

American

22% Anglo

3% Other

2% Asian

TOTAL STAFF

1,196

\$21,219,373

PAID IN RECAPTURE

FINANCE REPORT

	2021	2020	2019
PUBLIC SUPPORT & REVENUE:			
CONTRIBUTIONS & GRANTS	\$185,301	\$228,148	\$224,635
SPECIAL EVENTS (NET EXPENSES)	\$106,862	\$110,271	\$108,521
IN-KIND CONTRIBUTIONS	\$59,648	\$52,020	\$51,453
INVESTMENT INCOME/LOSSES	\$120,085	\$41,899	\$4,232
TOTAL PUBLIC SUPPORT & REVENUE	\$471,896	\$432,338	\$388,841
PROGRAM SERVICES & EXPENSES:			
GRANTS & SCHOLARSHIPS	\$204,738	\$122,665	\$213,140
OTHER PROGRAM SERVICES	\$88,186	\$80,441	\$73,853
MANAGEMENT & GENERAL	\$72,817	\$72,673	\$64,632
FUNDRAISING	\$3,795	\$6,341	\$8,695
TOTAL PROGRAM EXPENSES	\$369,536	\$282,120	\$360,320

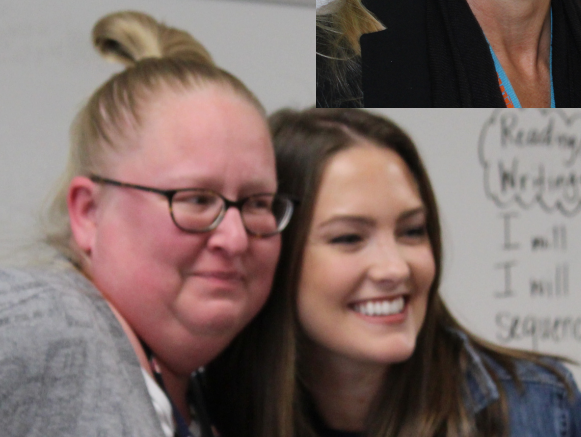
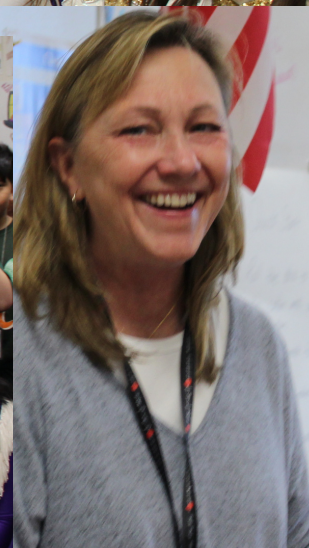
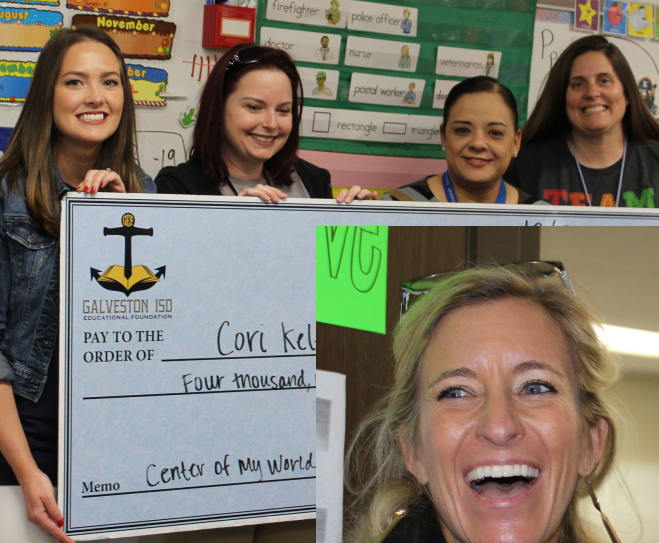
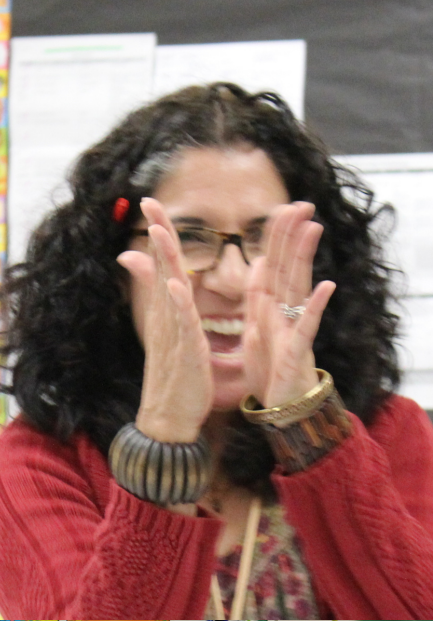
*2021 reflects the fiscal year ending August 31, 2021



GRANTS TO TEACHERS & SCHOOLS

Providing resources to educators to implement classroom projects

GEF granted \$141,770.76 to GISD educators to fund projects for the 2020-21 school year. Teachers submitted applications to GEF seeking support for projects aimed to improve student outcomes in the areas of early literacy, high school readiness, and college/career/military readiness. Applicants also proposed projects that took an innovative approach to meeting and exceeding learning objectives.



PROGRAMS & INITIATIVES

DISTRICT INITIATIVE

Each year, GEF collaborates with GISD to secure private funding for large-scale, district-wide initiatives that need financial support. These initiatives are identified by GISD leadership and approved by GEF's board of directors. Past projects include The Book Bus, water bottle filling stations, after school programs and BHS STEM labs.

1ST YEAR TEACHER ACADEMY

Provides training, mentoring, and resources to aid in the success of brand new teachers. GEF budgets for a \$10,000 a year investment in the program and provides gift cards for each new teacher to purchase supplies they need to get established.

JULIE SCHMID SUPPORT FUND

Created in honor of GEF's first executive director and materializes Julie's conviction that every child deserves hope and opportunity. The purpose of the fund is to support children in difficult circumstances that prevent them from participating in valuable educational experiences.

BHS STEM & BIO MED

Created in 2018 to support a growing community effort behind establishing and sustaining a cell culture lab and synthetic cadaver lab at Ball High. GEF supports the program with a \$5,000 annual commitment. Educators who teach those labs also continue to apply for funding during our grants cycle.

GEF ALSO HELPS FUND:

BHS PROJECT GRAD, INCUBATOR, LISA BIFFLE SCHOLARSHIP, TEACHER OF THE YEAR AWARDS

FUNDRAISING REPORT



OUT TO EAT FOR EDUCATION

Due to COVID,
GEF skipped our annual
Out to Eat for Education fundraiser in
October of 2020, which usually takes
place on the night of Ball High
School's Homecoming parade.



GISD EMPLOYEE GIVING CAMPAIGN

For the 2020-21 school year
GISD employees pledged to
donate over \$33,000 via payroll
deduction and one-time gifts to
GEF's Annual Employee Giving
Campaign. GO GISD!



2021 SEASIDE SPRING SOIRÉE

GEF hosted an online only
auction, skipping the in-person
event in Spring 2021 because of
the pandemic. Fortunately, our
donors continued with their
usual sponsorships and we met
our goal of raising \$100,000!

2020-21 BOARD OF DIRECTORS

Dr. David McCormick, President

Dominic Etienne, Vice President

Vivian Pinard, Secretary

Brandon Rogers, Treasurer

Dr. Chris Brownlee

Lynn Clore

Meg Fagg

Erica Farmer

Jason Hardcastle

Dr. Matthew Hay

Keath Jacoby

Dr. Bruce Leipzig

Kelly Masel

Lee Mencacci

Mary Jo Urbani

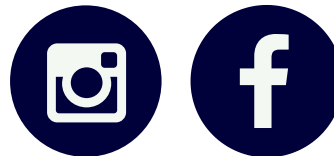


GALVESTON ISD
EDUCATIONAL FOUNDATION

**3904 AVENUE T
GALVESTON, TX 77550**

409.766.5156

www.GalvestonEdFoundation.org



@GALVESTONEDFOUNDATION